

Land Use Change Prediction using a Hybrid (CA-Markov) Model

Alireza Ildoromi¹ and Mahtab Safari Shad^{2*}

¹ Associate Professor, Department of Range and Watershed Management, Malayer University, Malayer, Iran

² Ph.D. Student, Department Watershed Management, Faculty of Natural Resources, Sari University of Agriculture and Natural Resource, Sari, Iran

Received: 6 September 2016 / Accepted: 14 January 2017 / Published Online: 20 March 2017

ABSTRACT Landsat data for 1992, 2000, and 2013 land use changes for Ekbatan Dam watershed was simulated through CA-Markov model. Two classification methods were initially used, viz. the maximum likelihood (MAL) and support vector machine (SVM). Although both methods showed high overall accuracy and Kappa coefficient, visually MAL failed in separating land uses, particularly built up and dry lands. Therefore, the results of SVM were used for Markov Chain Model and “CA” filter to predict land use map for 2034. In order to assess the ability of “CA Markov” model, simulation for 2013 was performed. Results showed that simulated map was in agreement with the existing map for 2013 at 84% level. The land use map prediction showed that built up area of 0.8298 km² in 2013 will increase to 1.02113 km² in 2034. In contrast, irrigated agriculture will decrease from 17.33 km² to 17.16 km², and rain fed agriculture from 45.07 km² to 44.49 km². Results of this research proved the application of “CA Markov” model in simulating the land use changes.

Keywords: Cellular Automata model, MAL, SVM

1 INTRODUCTION

Currently, the intensity of land use changes has created unprecedented changes in ecosystem and ecological processes at local, regional and global levels (Muñoz-Rojas *et al.*, 2015; Yalew *et al.*, 2016). Changes in land use are a direct result of human activities (Jafarian Jeloudar *et al.*, 2014; Debolini *et al.*, 2015). In order to manage resources for sustainable development, the quantitative information about land use change is useful (Slam *et al.*, 2016). Many works have been conducted on the effects of land use change (Sharma *et al.*, 2011; Salazar *et al.*, 2015). The research evidences show that land use change cause significant decrease in rainfall, increase in surface temperature, and have adverse effects on the adjacent areas.

land use change in this research, two methods of “maximum likelihood (MAL)” and the “support vector machine (SVM)” were used to classify images and preparation of the land use maps. The principle of SVM is linear classification of data that tries to select the line that has greater safety margin (Huang *et al.*, 2006). The SVM is one of the supervised learning methods used for classification and has been found an effective method in many studies (Camps-Valls and Bruzzone, 2008; Mountrakis *et al.*, 2011; Devadas *et al.*, 2012; Saiful Bahari *et al.*, 2016). It can also be used as a tool in predicting changes in land use and land conversion approaches by managers to identify and control the land use changes trend (Brimoh

*Corresponding author: Ph.D. Student, Department Watershed Management, Faculty of Natural Resources, Sari University of Agriculture and Natural Resources, Sari, Iran, Tel: + 98 918 270 9921, Email: mahtabsafari66@gmail.com

Since the predisposing factors of land use change are complex and human activities and natural factors in this process may be affected by different intensities and scales, its simulation is a difficult process (Verburg *et al.*, 2002). For this reason, different models have been modified and developed by researchers to simulate the complexity and dynamics of lands (Singh, 2003).

“Markov chain” analysis is one of the statistical models that can predict the state of the modeled system at time of (t+1), based on its condition at the time “t”. The “transition probability matrix” is the most important of its output. This matrix is informative and does not include transfer of spatial distribution. It seems that models should have spatial components in order to provide the spatial pattern of distribution (Breckling *et al.*, 2011). For this reason, “cellular automata” model is used in combination with “Markov chain”, which can present the dynamic of complex systems via simple rules. In this way, we can also simulate the future system spatially (Torrens and O'Sullivan, 2001).

Ekbatan Dam watershed is a sub watershed in Hamadan province, Iran. Due to the effects of light and shadow in this watershed as well its small size (being 221 km² and containing only 5 villages), preparation of a basic land use map through Landsat data is very difficult, especially for residential area. Therefore, the “MAL” and “SVM” methods were used to prepare the best land use map for the study area. Then by merging this map with “CA Markov model” the land use map for 2034 was predicted.

2 MATERIALS AND METHODS

2.1 Study area

Ekbatan dam watershed with an area about 221 km² is geographically located at 34° 36' to 34° 45' N and 48° 27' to 48° 42' E. It is a mountainous region north of Alvand Peak, 10 km southeast of Hamadan city at altitudes ranging from 1960 to

3572 m (Figure 1) (Hamadan Regional Water Authority, 2008).

2.2 Methodology

In order to achieve the objectives of the study, the land use maps for three periods were required. Due to the lack of these maps, three frames of non-clouded satellite images for 1992, 2000 and 2013 were used. Field data and GPS records were also applied in preparing the land use maps, for which the ArcGIS 9.3 and “IdrisiSelva” version were used. Furthermore, to predict land use map for the 2034, the “CA Markov” hybrid model was used.

2.3 Preparation of land use maps

First, radiometric quality was checked and geometric condition was controlled. The detectability of the images were enhanced by application of appropriate color composition that reflected the regional phenomenon, including bands 4, 3, and, 2 for TM and + ETM image sensor, and 5, 4 and 3 for the OLI image sensor. After visual inspection of the images, the two methods of supervised “MAL” and “SVM” were used to classify images. SVM has a sigmoid kernel function, through which the training data are planned in the form of nonlinear multidimensional space and separate them linearly in a data set that results in a linear classification of data (Vapnik, 1999). The main feature of this method is higher ability in the use of less training samples and achieves higher accuracy than other methods (Mantero, 2005). Thus in this research, the “MAL” (as a common method in land use classification) has been compared with the “SVM” method for the Ekbatan dam catchment. In order to assess the produced maps, the Kappa index, overall accuracy and visual interpretation were applied. Kappa index and overall accuracy equations are present below:

$$\hat{K} = \frac{P_o - P_c}{1 - P_c} \quad (1)$$

$$P_o = \frac{1}{N} \sum_{i=1}^k n_{ij} \quad (2)$$

$$P_c = \frac{1}{N^2} \sum_{i=1}^k (n_i + n + i) \quad (3)$$

Where K is Kappa index; P_o is overall accuracy; P_c is chance agreement; i , n_i and n are row, column and total numbers of pixels in the classification table, respectively.

2.4 Implementation of “CA Markov” model

In order to use “CA Markov” model in prediction of land use maps, we first need to

evaluate the ability of model to predict regional variations. So using “Markov chain” analysis and land use maps of 1992 and 2000, the “transition probability matrix” during this period was calculated. Then, using “cellular automata” model and result of “Markov” analysis, land use map was predicted for 2013. The forecast maps with the map that was produced using supervised classification for the same year was evaluated and the model was validated. After validating the model and based on the maps of the 2000 and 2013, land use map for 2034 was predicted.

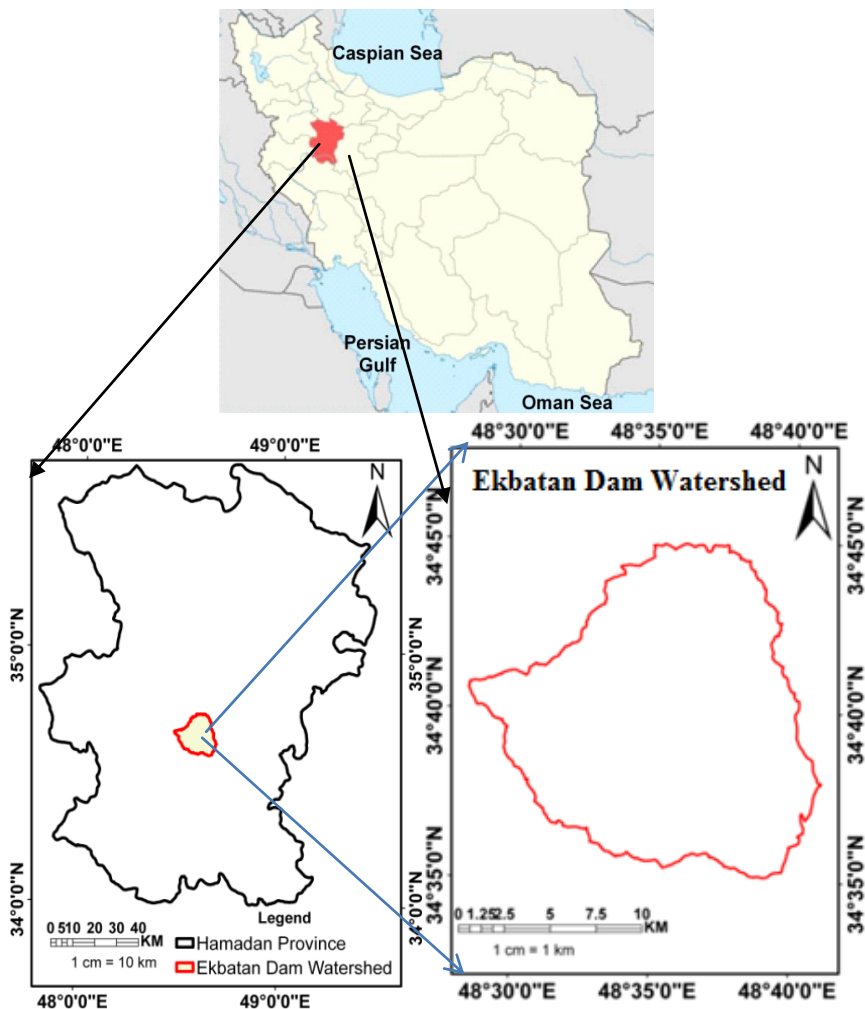


Figure 1 Geographical location of the study area in Iran

3 RESULTS

3.1 Land use maps

Land use maps provided by the “MAL” and “SVM” methods are presented in Figure 2. Statistics error matrixes of the produced maps are presented in Table 1.

The results of the detection of past changes in the period 1992 to 2000, 2000 to 2013 and 1992 to 2013, and the area of land use classes is provided in Table 2.

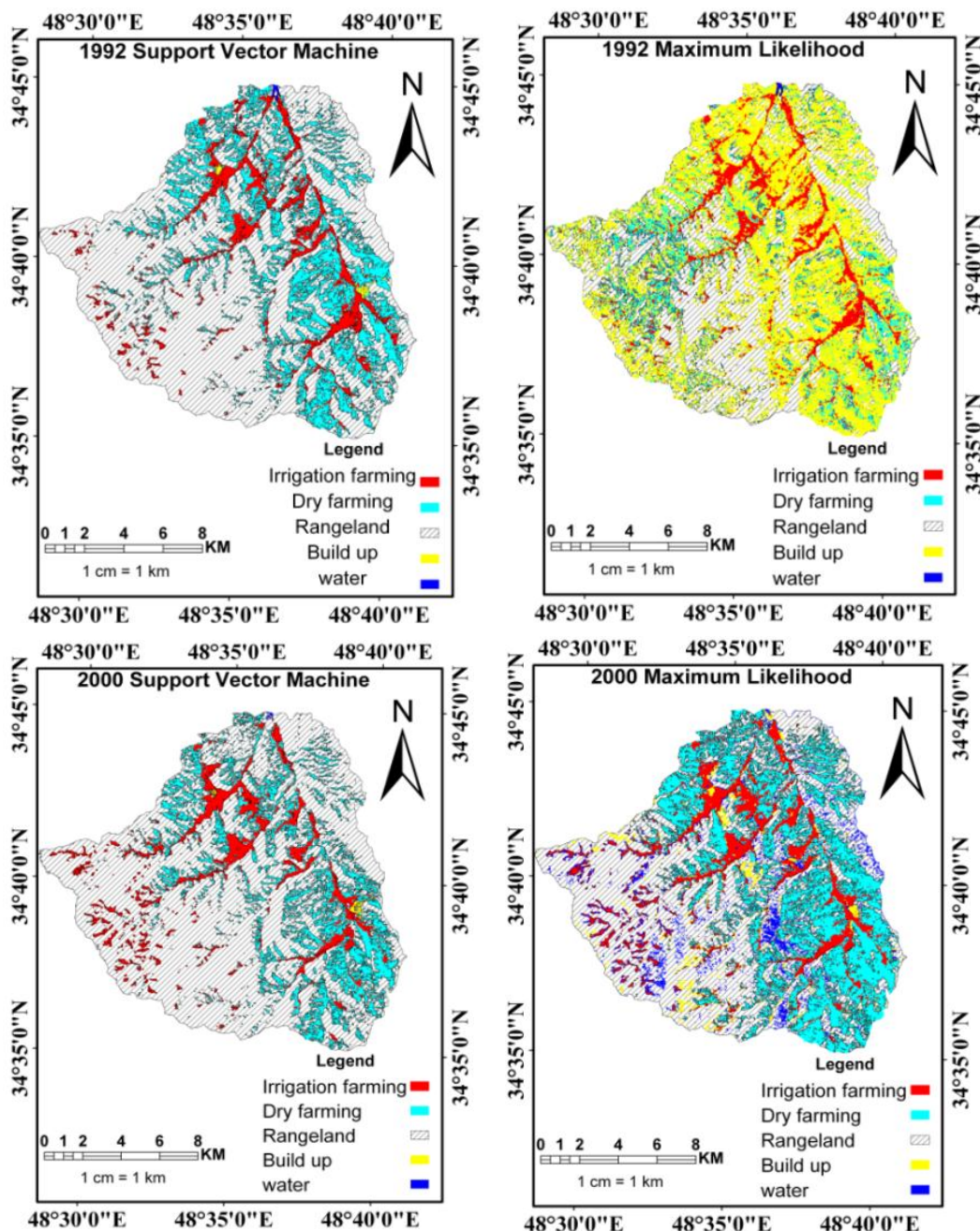


Figure 2 The maps of land use classification with SVM and Max method

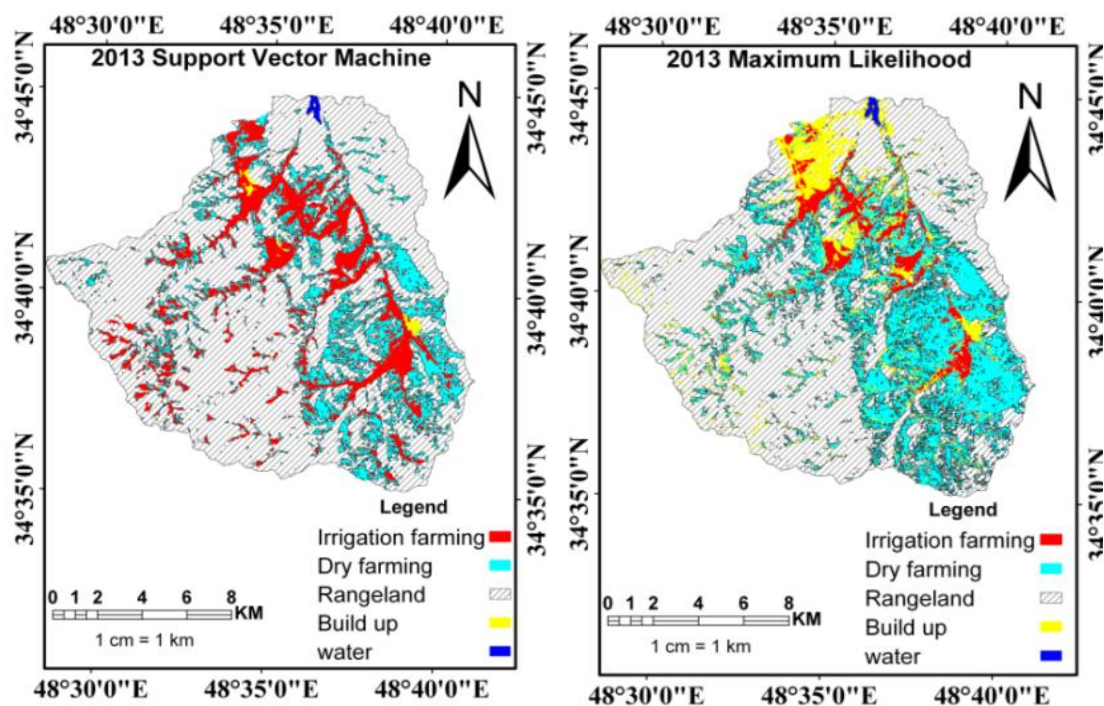


Figure 2 Continued

Table 1 Overall accuracy and Kappa coefficient of land use maps by the two classification methods

Classification method	1992		2000		2013	
	Kappa coefficient (%)	overall accuracy (%)	Kappa coefficient (%)	overall accuracy (%)	Kappa coefficient (%)	overall accuracy (%)
MAL	75.8399	0.4851	90.01	92.05	93.6265	0.8242
SVM	87.7505	0.5790	95.23	0.8344	96.5489	0.8922

Table 2 The land cover changes in km² in 1992, 2000 and 2013

Classes	1992 Area (km ²)	2000 Area (km ²)	2013 Area (km ²)	1992-2000 change (km ²)	2000-2013 change (km ²)	1992-2013 change (km ²)
Irrigation farming	17.272647	18.232094	17.330215	0.959447	-0.901879	0.057568
Dry farming	46.122504	36.616555	45.075595	-9.505949	8.45904	-1.046909
Rangeland	156.460231	164.926948	156.722129	8.466717	-8.204819	0.261898
Water bodies	0.22114	0.151481	0.465547	-0.069659	0.314066	0.244407
Built up	0.3474	0.4984	0.8298	0.151	0.3314	0.4842
Total	220.42	220.42	220.42			

In 1992 to 2000, the dry farming had decreased by 20.6%, while residential area had increased by 43%. In 2000 to 2013, rangelands showed the highest reduction of about 5.24%, while

residential area increased by 0.66%. In 1992 - 2013, dry farming had decreased by 2.27%, while the residential area had shown the highest growth (137%) compared with other land use classes.

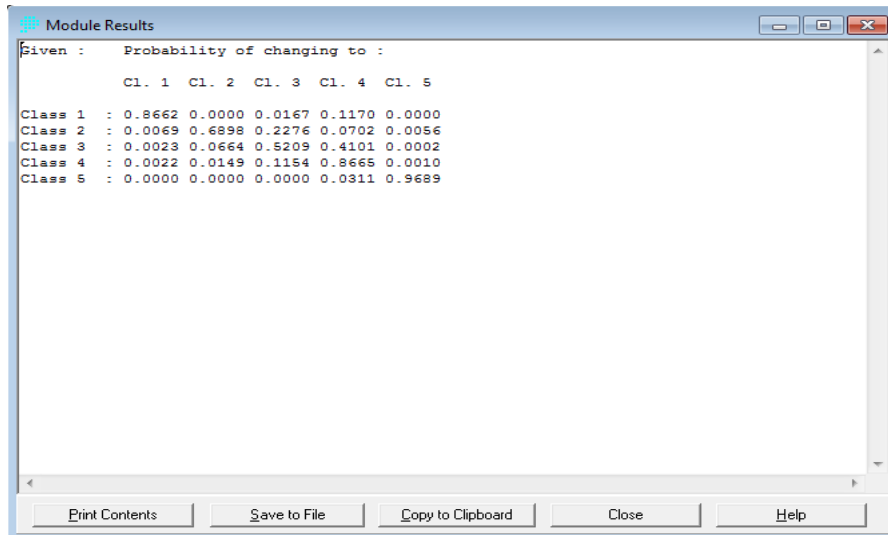


Figure 3 Markov probability change of land use (1992-2000)

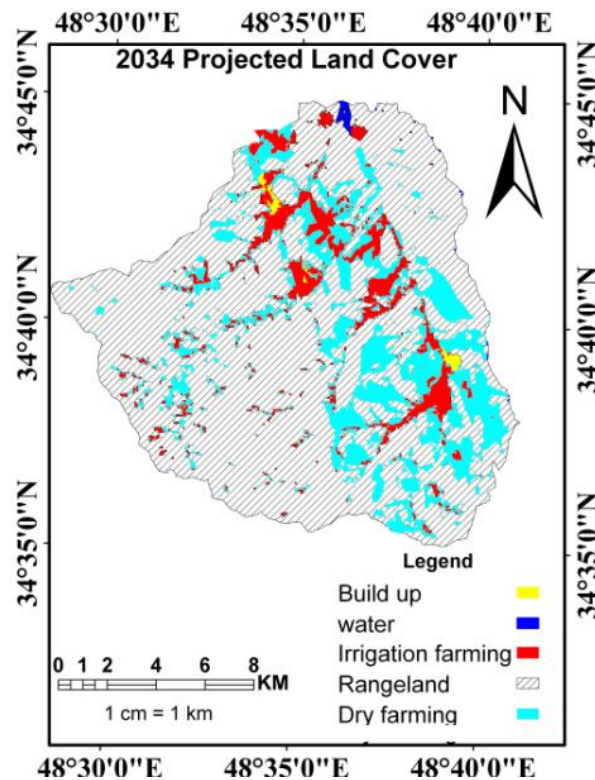


Figure 4 Map of 2034 land use: a result of “Cellular Automata-Markov”

Table 4 The land use changes in km² in 2013 and 2034

Classes	2013 area (km ²)	2034 area (km ²)	2013-2034 change (km ²)
Irrigation farming	17.330215	17.169947	-0.160268
Dry farming	45.075595	44.493754	-0.581841
Rangeland	156.722129	157.209452	0.487323
Water bodies	0.465547	0.525717	0.06017
Built up`	0.8298	1.02113	0.19133
Total	220.42	220.42	

3.2 Land use change prediction

Matrix of “Markov Probability Change” between 1992 and 2000 in combination with “CA” model was used to produce land use map for 2013 (Figure 3). A comparison of actual land use map and predicted land use map by the “CA Markov” model for 2013 showed the degree of agreement between simulated and base maps was 0.8471, which indicated the success of this model to simulate changes in the study area. Map predicted for 2034 is presented in Figure 4.

Comparison of the predicted map of study area with the land use map of 2013 showed that during 2013-2034 the rangeland and built up classes would increase, while the agricultural land would decrease by about 0.74 km² (Table 4).

4 DISCUSSION

Since the detection of the land use changes is affected by limitations of spatial, temporal and spectral specifications of satellite data, there are many different ways to do this. Hence, selecting appropriate methods to detect changes is very important and, of course, very difficult. In order to prepare the land use maps, the supervised “MAL” and “SVM” methods were used in the present study. The overall accuracy and Kappa coefficient greater than 70% in terms of accuracy is very good and less than 40% is weak (Mirzaee Mosavand, 2011). According to Table 1, Kappa and overall accuracy of both methods for 2000 and 2013 are very good and for 1992 in terms of Kappa are very good but in terms of overall accuracy are appropriate. Although, according to Table 1, both methods have been successful; but

reviewing and comparing the visual results of the analysis showed that “MAL” method allocated wrongly the irrigated agriculture pixels to build up pixels in some places and also had error in the simulation of dry lands. The results showed a better performance by the “SVM” than the “MAL” method, which is in correspondence with the results from other studies (Devadas *et al.*, 2012; Rezaii Makhdoom *et al.*, 2016; Saiful Bahari *et al.*, 2016). Evaluation of changes in the region showed that the low gradients of agricultural land as well as its accessibility to built-up areas had resulted to its gradual destruction in due course of time. Prediction of the land use was done through “CA-Markov” model using the error matrix method. Verification of the result showed the predicted outcomes had the Kappa index of 0.84. Since Kappa coefficient involve both correct and incorrect predicted pixels, it is a more accurate criterion to evaluate the prediction accuracy (Rezaii Makhdoom *et al.*, 2016). The “CA-Markov” model predicted the land use map for the year 2013, using the years 1992-2000 as the first period of “transition probability matrix”. Due to the differences in the effective economic and social factors, the land use change trends in the first and second period were not equal. Thus, it seems logical that the predicted changes by the model is somewhat different from the reality that has been also expressed in other studies (Falihatkar *et al.*, 2009; Dezhkam *et al.*, 2015; Haibo *et al.*, 2011). Despite the dynamic characteristic of the factors and land use change processes over

time in “CA Markov” model, one of its weaknesses is the non-interference of the physical and socio economic factors affecting the land use changes. Since regional development policies, economic interests and demographic changes of temporal variables, especially in developing countries like Iran are not predictable for long periods, these factors have not been considered in predicting land use maps in the model, which may make the results not reliable in the long term. However, the aim of prediction of land use changes often is assessment of the consequences of different scenarios, especially the continuation of the existing trend. The results of these predictions, that give information about what will happen in the future, can be a warning for the future land use situation. Therefore, we recommend that the factors affecting land use changes should be involved in future studies in order to remove the disadvantage of the model partly and increase the reliability of the results.

5 CONCLUSION

Based on the results of this study, “SVM” is a good method to prepare land use maps and can succeed in classifications, even with fewer training samples. In addition, it shows a better performance even if classes show similar spectral behavior. The results of this study suggest that a combination of remote sensing and geographic information systems in implementing the spatiotemporal land use models. Information about the type and percentage rate of land use change in natural resources and other sectors are very useful tools in natural resource management and can help planners in management and comprehensive development.

6 ACKNOWLEDGMENTS

The authors of the present paper feel obliged to thank Hamadan Natural Resource Organization for providing us with the land use map and we

should also express our gratitude to the NASA organization for supplying the land sat images to its users for free.

6 REFERENCES

- Braimoh, A.K. and Onishi, T. Geostatistical techniques for incorporating spatial correlation into land use change models. *Int J. App. Earth Obser. Geoinfo.*, 2007; 9(1): 438-446.
- Breckling, B., Pe'er, G. and Matisons, G. *Modeling Complex Ecological Dynamics*. Springer., 2011; 397 P.
- Camps-Valls, G., Gomez-Chova, L., Munoz-Mari, J. and Rojo-Alvarez, J.L. Martine Ramon M. Kernel-based framework for multitemporal and multisource remote sensing data classification and change detection. *IEEE T. Geosci. Remote.*, 2008; 46(6): 1822-1835.
- Devadas, R., Denhama, R.J. and Pringle, M. Support vector machine classification of object-based data for crop mapping, using multi-temporal land sat imagery. *International Archives of the Photogrammetry, Remote Sensing and Spatial Information Sciences, ISPRS Congress, 25 Melbourne, Australia, August – 01 September 2012*; 185-190.
- Dezhkam, S., Jabarian Amiri, B. and Darvishsefat, A.A. Anticipated changes in land use and cover in the Rasht city using Markov chain and CA model. *Environ. Rese. J.*, 2015; 6(11): 104-139. (In Persian).
- Debolini, M., Schoorl, J.M., Temme, A., Galli, M. and Bonari, E. Changes in Agricultural Land use Affecting Future Soil Redistribution Patterns: A Case Study in Southern Tuscany (Italy). *Land Degrad Dev.*, 2015; 26(6): 574-586.

- Falahatkar, S., Safianian, A., Khojedin, S.J. and Ziai, H. The ability of CA Markov model to predict land cover map (cas study: Esfahan Province). *Geomatics Conference, Tehran, 2009*; 1-9. (In Persian).
- Huang, T.M., Kecman, V. and Kopriva, I. *Kernel Based Algorithms for Mining Huge Data Sets, Supervised, Semi-supervised and unsupervised learning*. Springer Verlag, Berlin, Heidelberg. 2006; 260 P.
- Hamadan Regional Water Authority., *Feasibility studies water and potential utilization of surface water Hamadan province, 2008*; 69 P. (In Persian).
- Haibo, Y., Longjiang, D., Hengliang, G. and Jie, Z. Tai'an land use Analysis and Prediction Based on RS and Markov Model. *Procedia Environ. Sci.*, 2011; 10(4): 2625-2630.
- Jafarian Jeloudar, Z., Shabanzadeh, S., Kavian, A. and Shokri M. Spatial Variability of Soil Features Affected by Landuse Type using Geostatistics. *ECOPERSIA*. 2014; 2 (3): 667-679.
- Mirzaei Moosivand, A. *Assesmentthe changes in rangeland at different times using satellite imagery and GIS in Khalkhalcity, Rangeland and Watershed Master's thesis, Mohaghegh Ardabili University. 2011*; 117 P. (In Persian).
- Mantero, P., Moser, G. and Serpico, S.B. Partially supervised classification of remote sensing images through SVM-based probability density estimation, *IEEE T. Geosci. Remote Sens.* 2005; 43(3): 559-570.
- Mountrakis, G., Im, J. and Ogole C. Support vector machines in remote sensing. *J Photoger Remote Sens.*, 2011; 66(1): 247-259.
- Muñoz-Rojas, M., Jordán. A. and Zavala, L.M. De la Rosa D, Abd-Elmabod S.K, Anaya Romero M. Impact of Land Use and Land Cover Changes on Organic Carbon Stocks in Mediterranean Soils (1956–2007). *Land Degrad. Dev.* 2015; 26(2): 168-179.
- Rezaii Makhdoom, M.H., Valizade Kamran, Kh. and Andaryani, S. *Almas Poor J. Geo. Plan.*, 2016; 19(52): 163-183. (In Persian).
- Singh, A.K. *Modeling Land use/ Land cover Changes Using Cellular Automata in Geo-Spatial Environment, MSC Theses, Netherland.2003*; 58 P.
- Sharma, A., Kamlesh, N., Tiwari, P. and Bhadoria, S. Effect of land use land cover change on soil erosion potential in an agricultural watershed. *Environ. Monit. Assess.*, 2011; 173(1): 789-801.
- Salazar, A., Baldi, G., Hirota, M. and Syktus, J. McAlpine C. Land use and land cover change impacts on the regional climate of non-Amazonian South America: A review *Global Planet Change.*, 2015; 128: 103-119.
- Saiful Bahari, N.I. and Ahmad, A. Aboobaider B.M. Application of support vector machine for classification of multispectral data. 7th IGRSM International Remote Sensing & GIS Conference and Exhibition. *IOP Conf. Series: Earth Environ. Sci.*, Tomsk, Russian, 2016; July11-16; 1-8.
- Slam, M.R, MiahM, G. and Inoue, Y. Analysis of Land use and Land Cover Changes in the Coastal Area of Bangladesh using Landsat Imagery. *Land Degrad. Dev.*, 2016; 27(4): 899-909.
- Torrens, P.M. and O'Sullivan, D. Cellular automata and urban simulation: where do we go from here? *Environ. Plan B.*, 2001; 28(1): 163-168.

- Vapnik, V.N. An overview of statistical learning theory. IEEE Trans. Neural Network. 1999; 10(5):988-1000.
- Verburg, P.H., Soepboer, W., Veldkamp, A., Limpiada, R. and Espaldon, V. Modeling the spatial dynamics of regional land use: the CLUE-S model. Environ. Manage., 2002; 30(1): 391-405.
- Yalew, S.G., Mu, M.L, Griensven, A.V., Teferi, E., Priess, J., Schweitzer, Ch. and Zaag, P. Land-Use Change Modeling in the Upper Blue Nile Watershed. Environ., 2016; 3(3):1-16.

پیش بینی تغییر کاربری با استفاده از مدل تلفیقی CA- Markov

علیرضا ایلدرمی^۱ و مهتاب صفری شاد^{۲*}

- ۱- دانشیار، گروه مرتع و آبخیزداری، دانشکده منابع طبیعی و محیط زیست، دانشگاه ملایر، ملایر، ایران
- ۲- دانشجوی دکتری، گروه آبخیزداری، دانشکده منابع طبیعی، دانشگاه علوم کشاورزی و منابع طبیعی ساری، ساری، ایران

تاریخ دریافت: ۱۶ شهریور ۱۳۹۵ / تاریخ پذیرش: ۲۵ دی ۱۳۹۵ / تاریخ چاپ: ۳۰ اسفند ۱۳۹۵

چکیده با استفاده از تصاویر ماهواره‌ای لندست برای سال‌های ۱۹۹۲، ۲۰۰۰، ۲۰۱۳ و مدل CA- Markov، تغییرات کاربری اراضی برای حوزه آبخیز سد اکباتان شبیه‌سازی شد. در ابتدا دو روش طبقه‌بندی "حداکثر احتمال" و "ماشین بردار پشتیبان" استفاده شد. نتایج نشان داد اگرچه ضریب کاپا و درصد صحت کلی دو روش بالاست، اما از نظر بصری روش حداکثر احتمال در تفکیک کاربری‌ها به خصوص مسکونی و اراضی دیم نسبت به ماشین بردار پشتیبان ناموفق بود. بنابراین نتایج حاصل از ماشین بردار پشتیبان برای مدل Markov استفاده شد. از مدل زنجیره Markov و فیلتر CA به منظور پیش‌بینی نقشه کاربری اراضی سال ۲۰۳۴ استفاده شد. نتایج نشان داد نقشه شبیه‌سازی شده در سطح ۸۴٪ با داده‌های موجود مطابقت دارد. همچنین، مناطق مسکونی از حدود ۰/۸۳ در ۲۰۱۳ به ۱/۰۲ کیلومتر مربع در سال ۲۰۳۴ افزایش خواهد یافت. در مقابل زراعت آبی از ۱۷/۳۳ به ۱۷/۱۶ و دیم از ۴۵/۰۷ به ۴۴/۴۹ کیلومتر مربع کاهش می‌یابد. نتایج این تحقیق کاربردی بودن مدل CA- Markov برای شبیه‌سازی تغییر کاربری اراضی را اثبات می‌کند.

کلمات کلیدی: روش حداکثر احتمال، ماشین بردار پشتیبان، مدل اتومای سلولی